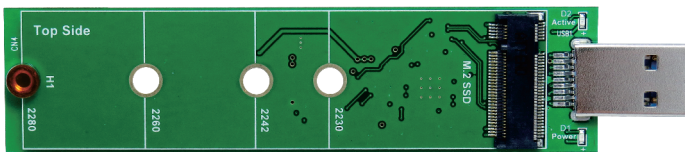


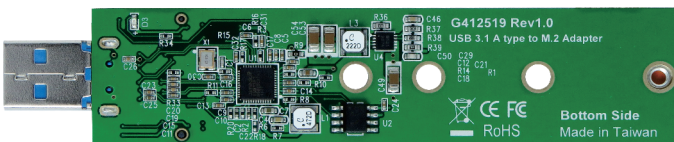
CONVERTER

USB 3.1 A type to M.2 (SATA I/F) SSD

Top Side



Bottom Side

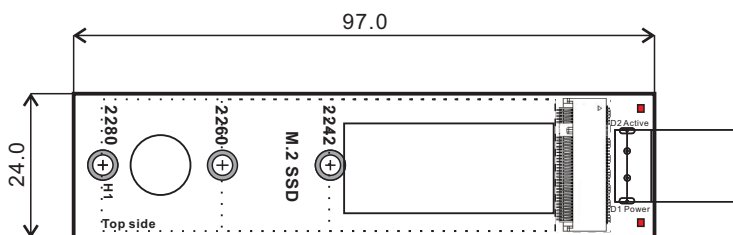


Features

- Build in ASM1351 USB3.1 high performance processor
- Build in M.2 NGFF Female connector
- PWM synchronous buck converter Power IC
 - ※3A maximum output current
 - ※Short circuit protection
 - ※In-rush current suppression
 - ※Thermal shutdown protection
 - ※ESD HBM (Human Body Mode)/2KV
- D1 Green LED on indicates SSD Power ready
- D2 Red LED Blinking indicates SSD active status

Specifications

- Compliant with USB3.1 Specification Revision 1.0
- Support UASP and Mass Storage Class Overview Rev1.4
- Support SATA Reversion 3.2
- Compliant with PCI Express M.2 Specification Version 1.0



Support M.2 M-key Form Factor

- Type 2280-D2-B-M: 80mm(L) x 22mm(W)
- Type 2260-D2-B-M: 60mm(L) x 22mm(W)
- Type 2242-D2-B-M: 42mm(L) x 22mm(W)
- Type 2230-D2-B-M: 30mm(L) x 22mm(W)

USB 3.1

A type
male

M.2
SATA I/F

